



# MICRO MIST

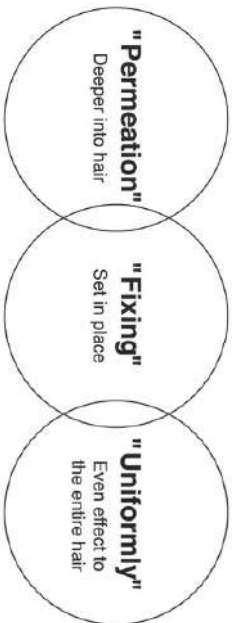
# Magical Power of Micro Mist

Here's the hair treatment available only at a beauty salon

Water possesses a hidden power. For example, it swells a hair, it permeates deep into a hair, it enhances treatment effects... etc. "MICRO MIST" was developed by focusing attention on this power of water. Through highly controlled ultrasonic waves, a great quantity of microscopic mist is generated at a stretch. Micro Mist, with magical power of water, is a strong supporter of hair treatment. In the world of today where perming and coloring are in full flower, what we long for is healthy hair. As we move on from hair-design to hair-care, "MICRO MIST" introduces a special hair treatment that cannot be done anywhere else but at salon.



## Birth of "MICRO MIST" in a New Salon Scene



### "Permeation"

Deeper into hair

Heating activates the molecular movement of treatment agents and water in hair. At the same time, heated micro mist swells the hair and enhances treatment agents permeate deep into each hair.

### "Fixing"

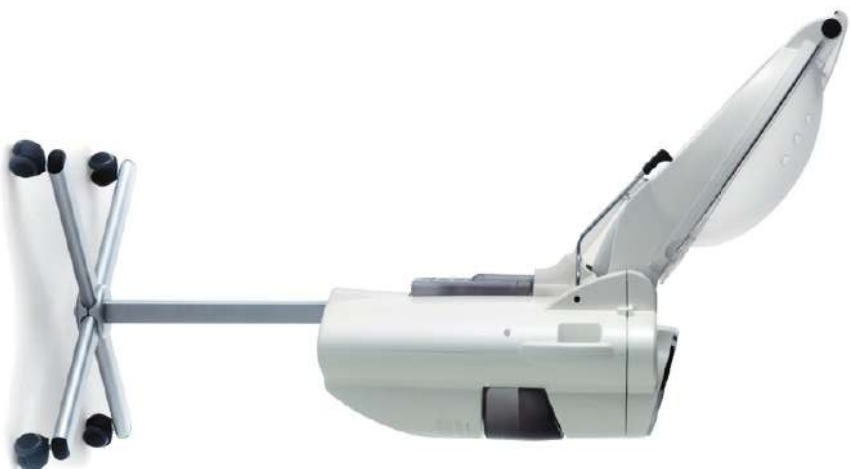
Set in place

Cooled air sent from the fan draws vaporized heat and rapidly soothes the molecular movement that has been activated by heat energy. This action reinforces fixation of treatment agents to the inside of damaged hair.

### "Uniformly"

Even effect to the entire hair

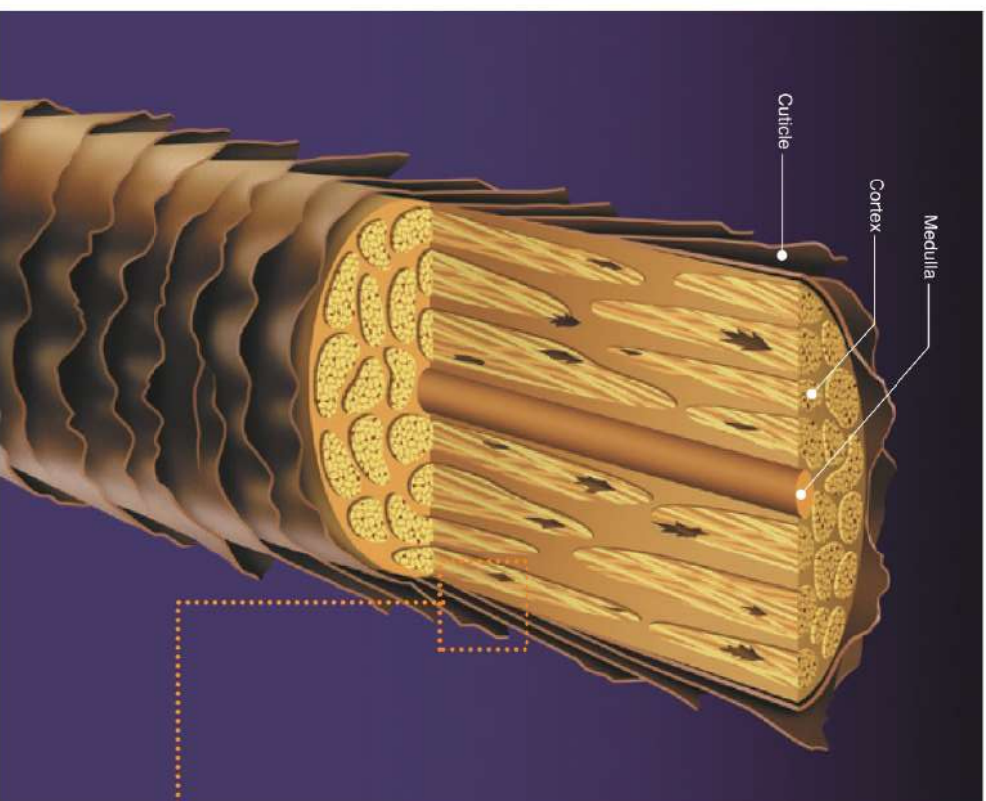
By circulating a large quantity of mist in the hood where the temperature is excellently controlled, the entire hair evenly receives heat energy. Each hair gets a treatment effect and retains moisture, resulting healthy, youthful hair.



# Regain Natural Healthy Hair with the Power of Water

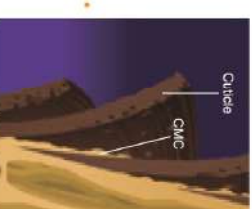
Hair-care generally indicates direct application of a treatment agent to hair.

It is actually one of the effective ways to repair damaged hair; however, there is a limit to it. In order to treat damaged hair more effectively, it is necessary to have a large quantity of a treatment agent penetrate deep into hair. Micro Mist, using the power of water, helps treatment particles permeate into damaged hair and reach even impaired area inside the hair.



## What does damaged hair mean?

It means a condition in which surface cuticles are being peeled off and hair elements are flowing out through the cuticles. Especially, losing CMC (cell membrane complex) causes many gaps in a hair. These "flow channels" do not only let perming solution and coloring chemicals penetrate too deeply into the hair, but also let protein flow out of the hair. The important point of hair-care is to fill up these channels between cuticles with treatment agents.

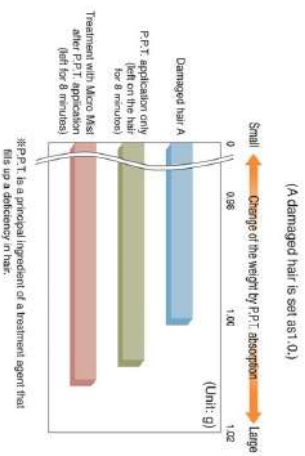


**Damaged hair**  
CMC flows out of hair and cuticles are being peeled off. The inner part of the cuticle itself is also damaged.



**Healthy hair**  
CMC is found between cuticles and it securely guards the hair.

## Comparison of absorption of a treatment agent



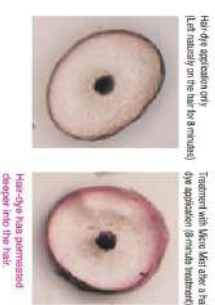
## Evaluation of permeation using Micro Mist

### Comparison of permeation (Data ①)



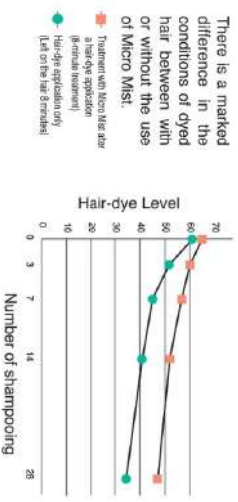
### Comparison of a cross section (Data ②)

(Sectional view of a hair through the light microscope)

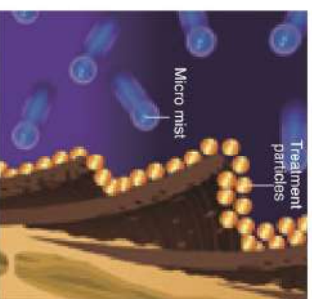


### Comparison of staying power (Data ③)

(Data ①②③ are expressed numerically in a graph.)



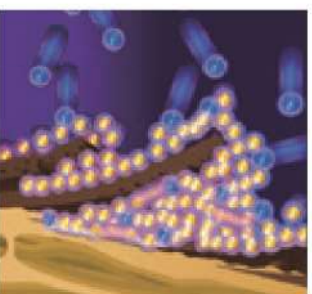
## Action of micro mist (01-04: conceptual diagrams)



01 Micro mist heated to a temperature of 40-50°C (105-125°F) helps swelling of hair cuticles on the surface open out.



02 Heated micro mist activates the molecular movement of treatment particles and lets them penetrate into the hair through opened cuticles.



03 Treatment particles penetrate even deeper into the hair shaft, caring cuticles and supplying CMC.



04 By cooling down the air rapidly, treatment particles get fixed to the hair.

# The Micro Mist Treatment Available Only at Salon

## BASIC PROCESS

**1** Shampooing  
Dry well with a towel after shampooing.

**2** Treatment application  
Apply a treatment agent uniformly on the hair. In order for the mist to be distributed as evenly as possible, let the ends of the hair loose and set it in such a way that tufts of hair would not lap over. Then, put a towel turban.



**3** Setting  
Install the hood, adjusting the body of the Micro Mist so that the nape pad touches the turban, and then put the face guard. This way, the process flows smoothly. Especially, installation of the face guard is very easy and does not take long. In addition, the face guard that is covered over the customer's face; therefore, there is no need to change it every time of its use.



**4** Heating  
The mist appeals through its stage effect. Warming starts according to the setting level. A large amount of mist wraps around the head, and at the same time, it softly warms above the hood. Micro Mist gives a pleasant visual effect in a salon; other customers will surely show their interests in the treatment even without being explained by the salon staff.



**5** Perfect for multiple-application treatment  
The hood opens up and presents its user-friendliness. No problem is found even when treatment requires multiple applications. As the hood conveniently opens up, you can easily apply the second and third treatments without having to adjusting the controls. Nothing can beat convenience of "MICHO MIST".



## 6 Heating

### A feeling of spa: a new kind of comfort

Reheating starts according to the setting level. As the temperature of the mist is controlled by microcomputer, a comfortable temperature (※① 40～50°C, ※② 105～125°F) is achieved. Micro Mist is well thought out in order for customers to enjoy a pleasant treatment time, especially with the special hood designed to have the best angle through which it does not come into the customer's view. The face guard that seals up the customer's head is also specially designed so that the customer can move his/her neck relatively freely.

(※① Celsius, ※② Fahrenheit)

## 7 Cooling



After heating ends, with an alarm telling its time, cooling starts. The air sent out from the fan quickly cools down and refreshes the air inside the hood. With a feeling of refreshness, it helps fixing of the treatment agent.

MICRO MIST

# A Professional Tool for Hair Treatment



## Controllable temperature and quantity of mist

Micro Mist adopts the mist generation system utilizing an ultrasonic probe. As compared to the mist generated by hot steam, the temperature control of micro mist is so efficient that customers can stay comfortable during the treatment. Furthermore, amounts of generated mist are controllable. Since they can be controlled according to the treatment agent and hair condition, the treatment can always be done with an appropriate amount of mist. It is also possible to automatically adjust levels of mist and temperature, and the operation time.

Note: Temperature indication on the control panel differs from the actual. Number in parentheses shows Fahrenheit for the US market only.

## Best design for comfort

The hood section is designed to set an elevation angle. When the hood is installed, the customer can feel a sense of release without having to see any part of the hood right in front of his/her eyes. With this design, customers feel neither occlusive nor pressured.

## Require as little storing space as possible

The hood section can rise vertically so that it does not take space for storage. Its damper structure gives a soft feeling.



## Separate ducts designed for the cooling air and mist

The mist spouted out from the sides inside the hood softly envelops the entire head while the chilled air is sent from the rear center to quickly cool off the heated mist.



(Arrows: image of the mist spread uniformly across the head)

## Easy height adjustment

The height of the body can be adjusted easily according to the height of customers. The large lever helps stylists' grasp and provides smooth operation.



## Water tank ready to be used for 20 customers

With a large tank that shows the amount of the water left inside, a full tank of water serves approximately 20 customers (when used for 8 minutes per customer). Even during busy hours, operation proceeds smoothly without interruption.



## Convenient drain tank that prevents unpleasant water leakage

The condensed mist left within the hood (back-water) is sent to the drain tank from the joint section of the upper part of the hood through the groove inside edge of the hood. In addition, the shape of the mist nozzles on the upper part of the hood (6 places) is designed in such a way that prevents water from dropping directly on to the customer's hair.



Easily removable drain tank



Mist nozzle



## COLOR VARIATION



WHITE



WHITE  
AK-200NIW/EA-200NI



CHARCOAL GRAY  
AK-200NIG/EA-200NI

Note : Actual color may vary from printed color represented above.

## Accessories



Towel turban (3 pcs.)

※ Towel turbans are consumables.



Face guard

※ Face guards are consum. bloc.

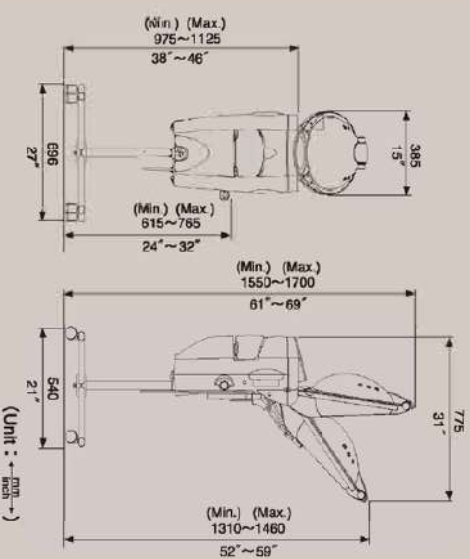


Option

**Deionizer**  
Ion-exchange resin traps and removes impurities. Purified water perfect for micro mist can easily be made.

**Deionizer cartridge and harness tester**  
When capacity of the cartridge decrease, purified water will be made which may cause residue to the equipment. The resin inside cartridge is over its capacity. The resin inside cartridge is over its capacity and regular exchange of a cartridge are necessary.  
※ Cartridges for the deionizer and harness tester are consumables and sold separately.

## Dimensions



Note: Maximum height in inches shows height with 2 inches longer flange for the drain.

## Specifications

Model Number	AK-200
Rated Voltage	110V/120V/220V/230V/240V
Rated Frequency	50/60Hz
Power Consumption	490W
Water tank capacity	2000ml (1/2 gal)
Drain tank capacity	350ml (12 oz)
Net Weight	25.0kg (55 lbs)

※ Accessories: Face guard X3, Towel turban X3,

※ Option: Deionizer T-J-5 x1, Deionizer cartridge X1, Harness tester X1

 **TAKARA BELMONT**

Tel: +81-8-62-12-5323 | Email: [beauty@takara-bel.com](mailto:beauty@takara-bel.com)  
<https://beauty.takara-belmont.co.jp>