

Find Your Beauty **MILBON**



掌握美丽的关键是发型和颜色。

# GRAND LINKAGE

Style and Color are the keys  
to beautiful hair.

Maintain Your Hair's Style and Color  
to Preserve that Just-Left-the-Salon Look.

沙龙染发后的发型和颜色。

如果能保持的话，秀发将美丽常驻。

After you leave the salon, your perfectly colored and styled hair will slowly begin to lose its vibrancy and shape.

The key to maintaining that just-left-the-salon look is a **hair wash routine** that uses the right **hair care products**.

沙龙染发后，发型易打理，颜色也和示意图一样。有几个原因会导致其渐渐脱色变形。若想保持美丽 请关注洗发的习惯和护理品。

**Friction from shampooing**

**洗发时的摩擦**

damages the hair,  
making it frizzy  
and unmanageable.

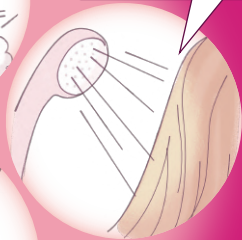
会让秀发受损，变得毛躁。



**Shampooing**

**每天的洗发**

alters your hair's color.  
会让沙龙染发的颜色发生变化。

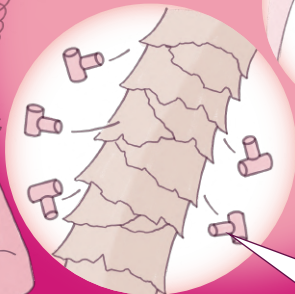


**Shampooing  
washes out your  
hair's proteins,**

**蛋白质流失**

deforming the structure  
of each strand and creating frizz.

每一根头发的形状会崩塌和卷曲。



For  
bath time  
洗澡时  
间用



Keep your hair beautiful  
with a **hair wash routine** that prevents friction.  
通过抑制摩擦的**洗发习惯**,保持美丽。

### Thoroughly prepare beforehand 事先做好准备

Brush your hair before jumping into the shower to remove any dirt or tangles. Then rinse your hair well for 90 seconds – this helps remove impurities and reduces friction.

事先梳去灰尘,梳开打结的部分。  
用1分30秒左右充分进行预洗,  
让污垢更易脱落,摩擦也会减少。



### Lightly lather before applying to hair 涂抹之前轻轻起泡

Spread shampoo on your palms, lightly lather, and then apply. This creates a rich foam and reduces friction.

将洗发水摊在手掌上,轻轻起泡后涂抹。  
绵密的泡沫更易起泡,减少头发的摩擦。



**Change your hair care products** to retain that just-left-the-salon style and color.

如果想让沙龙染发的发型和颜色更持久的话,就要**改变护理品!**

Flip over for more details  
马上翻到背面

Maintain your style and color with hair care products.

护理品保持发型和颜色。

Beautiful Style 美丽的发型

Point: Preventing protein loss to maintain your perfect style.

为了保持美丽的发型，我们着眼于蛋白质的流失。

Following a salon visit, every strand of your newly colored hair is in place and frizz-free.  
沙龙染发后，每一根毛发的形状都很整齐，发型易打理。

Hair proteins are gradually washed out, deforming your hair structure and making it frizzy and unmanageable.  
蛋白质一点点流失，毛发的形状变得崩塌、卷曲、毛躁。

Every time you wash  
在反复洗发的过程中

My color has lost its vibrancy  
染发不再美丽



Prevents the loss of hair proteins and maintains its beautiful style.

Botanical Bonding Technology. 抑制蛋白质的流失，保持美丽的发型。采用植物性接合技术应对。

Echinacea Purpurea Extract\*1 repairs hair, maintaining that just-left-the-salon color longer.

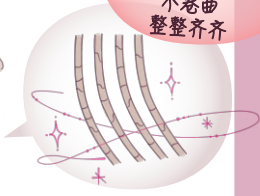
添加紫松果菊提取物\*1，修复毛发。

沙龙染发后的美丽持续。

Echinacea Purpurea  
紫松果菊



Each strand is frizz-free and in place  
每一根都不卷曲，整整齐齐



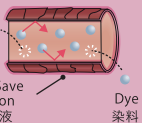
Beautiful Color 美丽的颜色

Point: Color loss from shampooing. 我们着眼于洗发引起的颜色变化。抑制褪色的2种方法。  
Two approaches to preventing color fade.

Color Save Emulsion\*2 seals the cuticles to lock in color.

保色乳液\*2，将染料的流失路径隔断。

Color Save Emulsion  
保色乳液

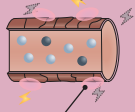


Dye  
染料

Peach Leaf Extract\*3 protects hair from trace amounts of chlorine in tap water\*4.  
桃叶提取物\*3保护秀发不受自来水中微量氯\*4的伤害。

桃叶提取物

Trace amounts of chlorine  
微量氯



An analysis of shampoo-induced color change

After 7 washes with shampoo and treatment on bleached hair dyed with Milbon's hair coloring products.

验证洗发引起的颜色变化

将漂过的头发用本公司的染发剂染过后，重复7次洗发护发。



\*1 Echinacea Purpurea Extract: Hair repairing ingredient

\*2 Amodimethicone, Steartrimonium Chloride.

\*3 Prunus Persica (Peach) Leaf Extract: Hair protection ingredient

\*4 Sodium Hypochlorite and other chemical compounds found in tap water for disinfection.



An uplifting, airy floral scent  
with a base note of green apple  
以青苹果为基调，  
让人心情愉悦的轻盈花香

## Shampoo 洗发水

Prevents color fade caused  
by trace amounts of chlorine  
and leaves hair soft and manageable.

抑制微量氯引起的褪色，  
让秀发柔顺易打理。

Enriched with: Soluble Collagen\*5  
Peach Leaf Extract

[添加成分] 水溶性胶原蛋白\*5 桃叶提取物

### How to Use 用法

Apply mainly to the ends and gently massage  
up to the mid-length of the hair.

用温水充分预洗，再用手掌起泡后洗发。

**SILKY**  
柔顺

(For fine hair)  
(面向软发质)



SilkyLux

**SMOOTH**  
柔软

(For normal hair)  
(面向普通发质)



WillowLux

**VELVETY**  
滋润

(For coarse hair/ frizzy hair)  
(面向硬发质/天然卷)



VelourLux

[Usage Amount] [建议用量]	Approx. 约	[Size] [容量]
Short to Bob 短发~波波头	:	3mL
Medium 中发	:	6mL
Long 长发	:	9mL
		200mL
		500mL
		1L

## Hair Treatment 护发素

Suppresses frizz to maintain beautiful,  
manageable style.

抑制毛发的卷曲  
持续易打理的美丽发型。

Enriched with: Echinacea Purpurea Extract  
Peach Leaf Extract

[添加成分] 紫松果菊提取物 桃叶提取物

### How to Use 用法

Apply mainly to the ends and gently massage  
up to the mid-length of the hair. Rinse thoroughly.

以发梢为中心涂抹，一边充分揉搓  
一边涂抹至中间位置。之后冲洗干净。

**SILKY**  
柔顺

(For fine hair)  
(面向软发质)



SilkyLux

**SMOOTH**  
柔软

(For normal hair)  
(面向普通发质)



WillowLux

**VELVETY**  
滋润

(For coarse hair/ frizzy hair)  
(面向硬发质/天然卷)



VelourLux

[Usage Amount] [建议用量]	Approx. 约	[Size] [容量]
Short to Bob 短发~波波头	:	3mL
Medium 中发	:	6mL
Long 长发	:	9mL
		200g
		500g
		1kg

For customers who have received salon treatments  
做过沙龙护理的客人

Weekly intensive home care. Extends the life of  
salon treatments

每周一次的家用集中护理。  
沙龙护理的效果更持久。

Enriched with: Hybrid Polymer\*6  
Color Save Emulsion

[添加成分] 混合聚合物\*6 保色乳液

### How to Use 用法

Use one vial per week.  
请每周使用一次，每次一支。

**SILKY**  
柔顺

(For fine hair)  
(面向软发质)



4

**SMOOTH**  
柔软

(For normal hair)  
(面向普通发质)



4+

**VELVETY**  
滋润

(For coarse hair/ frizzy hair)  
(面向硬发质/天然卷)



4X

[Size] [容量] 9g x 4

\*5 Soluble Collagen: Moisturizing ingredient

\*6 Polysilicone-14: Hair protection ingredient

● All images are for illustrative purposes only. ● 插图、照片都是示意图。

# GRAND LINKAGE

Exclusive Distributor / 经销商 : **NEKDERX** Sdn Bhd (243577-M) Tel: 03 - 7726 8733

Sub Distributor / 分销商 : Uni Beauty Enterprise S/B (East Malaysia)  
Tel : 088 - 230 776

Hong Guan (Brunei)  
Tel : +673 -2793205

Follow Us :



MILBON MALAYSIA

[www.milbon.com.my](http://www.milbon.com.my)