

Elujuda

DEESSE'S
for natural color design

The power of nature, the beauty of hair.
自然的力量，柔顺的秀发。



Making high quality, design based on easy & natural blow dry.
为高品质制造完美自然吹干造型。



Hair Texture
毛发质感

Coarse and Unruly Hair
粗硬又毛燥的毛发

Result
功效

Hair becomes softer and more flexibility
提高头发柔软质感, 调整为服贴状态

Component
repair hair
修补成分

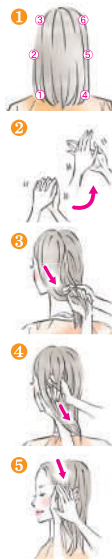
"Olive squalane" gives softness to cortex
橄榄角鲨烷软化发丝皮脂内层让头发柔顺服贴

MO (Mellow Oil) 丰盈柔软品项

MO



HOW TO APPLY 正确涂抹方法



120ML

■ Hair Length 头发的长度

Short 短发 Medium 中长发 Long 长发

1 pumps 2 pumps 3 pumps

■ Hair Density 发量

Fine 发量少 Volume 发量多

- 0.5 pump + 0.5 pump

Hair Texture
毛发质感

Fine and low elasticity hair
弹性较弱，细幼的毛发

Result
功效

Strengthen fine hair and maintain volume
给予头发适度的强韧与丰盈柔顺的质感

Component
repair hair
修补成分

PPT silk oil-soluble gives strength to cortex
富有加强发丝皮脂内层的PPT丝绸油性成分

FO (Fluent Oil) 柔顺细致品项



HOW TO APPLY 正确涂抹方法



FO



120ML



■ Hair Length 头发的长度

Short 短发 Medium 中长发 Long 长发

1 pumps 2 pumps 3 pumps

■ Hair Density 发量

Fine 发量少 Volume 发量多

- 0.5 pump + 0.5 pump

Elujuda

DEESSE'S
for natural color design

emulsion

Moisturizes the hair right to its core, with a soft and fluffy formulation.
修复内部创造轻盈顺滑素材

Fine Hair
柔细发质

Ceramide 2 which has the moisture retention function prevents water evaporation from CMC and provides a soft and supple condition to fine hair which has a lower moisture retention capacity.

神经酰胺之中的「神经酰胺2型」具有保持水分的高机能，可以防止CMC的水分蒸发，帮助柔细发质增加保持水分的能力，缔造柔滑优美的秀发。

CMADK

HOW TO APPLY 正确涂抹方法

emulsion



120G



■ Hair Length 头发的长度

Short 短发 Medium 中长发 Long 长发

1 pumps 2 pumps 3 pumps

■ Hair Density 发量

Fine 发量少 Volume 发量多

- 0.5 pump + 0.5 pump

Elujuda

DEESSE'S
for natural color design

emulsion +

Moisturizes the hair right to its core, with a soft and fluffy formulation .
修复内部创造轻盈顺滑素材

Normal - Coarse Hair
普通 ~ 粗硬

Aqua collagen penetrates into CMC and increases the amount of moisture in CMC,
then softens the hard and stiff hair.

「纯胶原蛋白」渗透至CMC细胞增高水分，修护粗硬的发质，缔造温顺的头发。



HOW TO APPLY 正确涂抹方法

emulsion +



120G



■ Hair Length 头发的长度

Short 短发 Medium 中长发 Long 长发

1 pumps 2 pumps 3 pumps

■ Hair Density 发量

Fine 发量少 Volume 发量多

- 0.5 pump + 0.5 pump

A lightweight leave-in serum that leaves hair soft and silky all the way from the roots.

从发根注入轻盈活力，制造自然蓬松好发质之
极度轻质护发油系列。

Lightweight leave-in serum for fine hair that easily flattens out, leaving hair light and supple.

为纤细发质而设计，令发丝轻盈、提升蓬松度。

Light and supple For fine hair
打造轻盈柔软适合纤细发质

limber
serum

Baobab Seed Oil
猴面包树菜籽油

HOW TO APPLY 正确涂抹方法

1

Create supple texture from the roots
从发根开始涂抹打造弹性柔度



2

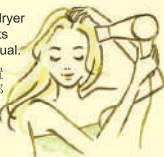
For long hair or those with thick hair, apply twice.
长发或粗硬发质建议涂抹两次



3

Place the hair dryer near the roots closer than usual.

将吹风机放置于靠近发根部位进行吹干，制造蓬松度



120ML



■ Hair Length 头发的长度

Short 短发 Medium 中长发 Long 长发

2 pumps

3 pumps

4 pumps



A lightweight leave-in serum that leaves hair soft and silky all the way from the roots.

从发根注入轻盈活力，制造自然蓬松好发质之极度轻质护发油系列。

Lightweight leave-in serum for coarse and unruly hair, leaving hair soft and supple.

为一般~粗硬、难以打理发质而设计，令发丝变轻盈易打理、更加闪亮迷人。

Soft and supple For normal to coarse hair
打造柔韧亮泽质感适合一般~粗硬发质

mellow
serum

Baobab Seed Oil
猴面包树菜籽油

HOW TO APPLY 正确涂抹方法

1

Create supple texture from the roots

从发根开始涂抹打造弹性柔度



2

For long hair or those with thick hair, apply twice.

长发或粗硬发质建议涂抹两次



3

Place the hair dryer near the roots closer than usual.

将吹风机放置于靠近发根部位进行吹干，制造蓬松度



120ML



■ Hair Length 头发的长度

Short 短发 Medium 中长发 Long 长发

2 pumps

3 pumps

4 pumps



Exclusive Distributor : **NEKDERX** Sdn Bhd (043577-99) Tel :03 - 7726 8733
East Malaysia Sub - Distributor : **UNI BEAUTY ENTERPRISE SDN BHD** Tel : 088 - 230776



MILBON MALAYSIA