

Find Your Beauty **MILBON**

Give your bleached hair  
color design suppleness  
and manageability.

为漂白设计的  
秀发带来柔韧动感且易打理。

*Elujuda*

BLEACH CARE SERUM

BLEACH CARE GELSERUM



Dry and unmanageable  
毛躁又干枯

Tangled and difficult to run fingers through  
打结难梳理



Gets matted when wet  
弄湿时缠绕一起

Lost its luster  
失去光泽

Want to enjoy bleached hair color designs but struggling to keep your hair sleek and frizz-free? in hair damaged by the bleaching process.

虽然想试着通过漂白设计来进一步享受发型的乐趣,但是轮廓总觉得不太对...

其原因就是漂白受损发特有的「**漂白卷曲\***」。

The problem is **bleach-induced frizz\***

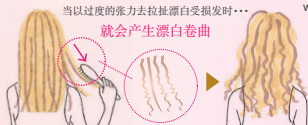
\*当漂白受损发被手指或梳子等强大的力量卡住时,头发会产生一根一根的卷曲。

\*Bleach-induced frizz occurs when a strong force is applied to bleached strands, such as when they are tugged by fingers or a brush.

When excessive tension is applied to bleached hair, **bleach-induced frizz occurs.**

当以过度的张力去拉扯漂白受损发时...

就会产生漂白卷曲



Hair becomes unmanageable

when bleach-induced frizz occurs.

当漂白卷曲产生时...

很难打理

Elujuda Bleach Care Serum and Elujuda Bleach Care Gel Serum are oil-based products that provide suppleness and manageability to different types of hair.

elujuda BLEACH CARE SERUM和 BLEACH CARE GEL SERUM是配合能实现「柔韧动感」和「易打理」发质推出的2种发油。

Evenly coats

bleached hair so your fingers can slip right through.

均匀涂抹漂白受损发, 让秀发易梳理

Tames frizz-prone bleached hair  
抚平易卷曲的漂白受损发

Frizzy, fluffy hair that tangles at the ends  
发梢易打结且蓬松毛躁

<适合软发质的人>

滑顺质感

Elujuda

BLEACH CARE SERUM

<护发素>

120mL

Rough, stiff hair that gets frizzy and overly voluminous  
从发根到发梢都容易变粗糙,变硬

<适合普遍发质~硬发质的人>

柔顺质感

Elujuda

BLEACH CARE GEL SERUM

<护发素>

120g



Follow these tips on applying the product and blow drying your hair to keep it sleek and frizz-free.  
 跟随「涂抹方法」和「吹干方法」的小诀窍，从明天开始带来有着美丽轮廓的秀发。

## Directions 使用方法

- ① Take up an appropriate amount into your palm and run it through towel-dried hair from the mid-lengths to the ends using your fingers.  
毛巾擦干后，取适量在手，用手指顺着发中~发梢涂抹。
- ② Blow dry your hair while running your fingers through it to align the ends.  
如同整理发梢般，边梳理边吹干。

Tips on applying the product  
to achieve beautiful bleached hair  
让漂白受损发变美的 涂抹重点

For easier drying and better manageability  
更加容易吹干&提升打理感！



Hand-press application  
用手掌按压涂抹



Inner layer at the back of the head  
后脑勺内侧

After applying the product throughout the hair, **gently press hair between the palms from the mid-lengths down to the ends** to smoothen the cuticles and distribute evenly.

全部涂抹后，像是要打理发中~发梢的手腕片般，以双手手掌夹住头发后按压充分涂抹。

Apply remaining serum or gel serum on the palms to the **inner layer of hair at the back of the head from roots** and evenly distribute the product throughout the hair.

将残留于手掌中的serum或gel serum从后脑勺内侧的发根附近开始涂抹至头发各处。

Tips on blow drying  
to achieve beautiful bleached hair  
让漂白受损发变美的 吹干重点

For reaching frizz-free hair  
让秀发不再卷曲，柔顺直至发梢



No-tension blow drying  
无张力吹干

Blow dry without pulling the hair as much as possible. Make sure excessive tension is not applied to the hair.

用吹风机吹干头发时**尽量不要拉扯**。此时，请不要施加过度的张力。

## [Usage Amount] 【建议用量】

### BLEACH CARE SERUM

Short: 1 pump  
短发 ... 按压1下  
Medium: 2 pumps  
中发 ... 按压2下  
Long: 3 pumps  
长发 ... 按压3下



### BLEACH CARE GEL SERUM

Short: 1 pea-sized amount  
短发 ... 珍珠1颗分  
Medium: 2 pea-sized amount  
中发 ... 珍珠2颗分  
Long: 3 pea-sized amount  
长发 ... 珍珠3颗分



\*For illustrative purposes only.

\*插图，照片都是示意图。

# Elujuda accompanies you in your daily life. Enjoy the comfort of a salon finish, anywhere, anytime.

随时都能拥有沙龙护理后的舒适感。贴近女性生活场景的「Elujuda」。

For hair that's soft, supple, and manageable

带来柔顺且易造型的秀发



Elujuda  
FO

(Leave-in Hair Treatment)

〈护发素〉  
120mL



Elujuda  
MO

Moisturize from within  
forsilky soft hair

带来滋润的松软秀发



Elujuda  
EMULSION

(Leave-in Hair Treatment)

〈护发素〉  
120g



Elujuda  
EMULSION+

For hair that's supple and manageable all the way from the roots  
带来从发根开始柔韧且易造型的秀发



Elujuda  
LIMBERSERUM

(Leave-in Hair Treatment)

〈护发素〉  
120mL



Elujuda  
MELLOW SERUM

# Elujuda

Exclusive Distributor / 经销商 : **NEKDERX** Sdn Bhd (243577-W) Tel: 03 - 7726 8733

Sub Distributor / 分销商 : Uni Beauty Enterprise S/B (East Malaysia)  
Tel: 088 - 230 776

Hong Guan (Brunei)  
Tel: +673 - 2793205

Follow Us :



MILBON MALAYSIA

www.milbon.com.my