

# MORPHOSIS

---

HAIR  
TREATMENT  
LINE





# HEALTH AND BEAUTY

---

Research and nature

Hair's beauty is closely linked to its health. For that reason looking after scalp and hair is important at all times, following a hairdresser's advice and using Morphosis Hair Treatment line.

## Why Morphosis?

- Because it is a professional treatment that only an expert can prescribe
- Because it offers specific formulas for each type of scalp and hair anomaly
- Because its synergic programs can be modulated based on results obtained, the season and lifestyle
- Because it uses the best natural main principles, selected from Mediterranean flora and processed using technologies which do not alter virtues acknowledged by centuries-old cosmetic tradition
- Because it provides a simple, effective, relaxing hair beauty routine at home too

# THE MORPHOSIS LINE

SCALP



## MORPHOSIS DENSIFYING

DENSIFYING ANTI-HAIR LOSS TREATMENT  
Densifies and texturizes thin hair with a sensitive scalp

DENSIFYING SHAMPOO  
DENSIFYING ACTIVATOR



## MORPHOSIS REINFORCING

REINFORCING ANTI-HAIR LOSS TREATMENT  
Revitalizes and gives body to thinning hair with an oily scalp

REINFORCING SHAMPOO  
REINFORCING ACTIVATOR



## MORPHOSIS DESTRESS

CALMING, REFRESHING TREATMENT  
Gives sensitive scalp relief and wellness

DESTRESS SHAMPOO  
DESTRESS SERUM



## MORPHOSIS BALANCE

REBALANCING TREATMENT  
Normalizes and controls the production of sebum with oily scalp

BALANCE SHAMPOO



## MORPHOSIS PURIFYING

PURIFYING ANTI-DANDRUFF TREATMENT  
Controls and prevents skin peeling

PURIFYING SHAMPOO



## MORPHOSIS SCALP CONTROL

IN-DEPTH, REFRESHING CLEANSING TREATMENT FOR THE SCALP  
To exfoliate and revitalize the scalp. Prolongs that wellness feeling

SCALP EXFOLIATE  
SCALP REFRESH SPRAY



## MORPHOSIS REPAIR

REPAIRING, SHINING TREATMENT  
Hydrates and repairs damaged, nerveless hair

REPAIR SHAMPOO  
REPAIR CONDITIONER  
REPAIR RICH TREATMENT  
REPAIR VELVET  
REPAIR SERUM



## MORPHOSIS SUBLÌMIS OIL

NOURISHING, DISCIPLINING TREATMENT  
Illuminates and makes hair silky with an anti-frizz effect

SUBLÌMIS OIL SHAMPOO  
SUBLÌMIS OIL CONDITIONER  
SUBLÌMIS OIL DEEP TREATMENT  
SUBLÌMIS PURE OIL  
SUBLÌMIS SHINE LIGHT OIL  
SUBLÌMIS OIL ALL DAY MOISTURE EMULSION



## MORPHOSIS COLOR PROTECT

COLOR PROTECTION TREATMENT  
Prevents fading and dehydration for longer-lasting colour

COLOR PROTECT SHAMPOO  
COLOR PROTECT CONDITIONER  
COLOR PROTECT INTENSIVE TREATMENT  
COLOR PROTECT BI-PHASE



## MORPHOSIS VOLUMIZING

VOLUMIZING, ENERGIZING TREATMENT  
Gives fine hair more body and makes it easier to manage

VOLUMIZING SHAMPOO  
VOLUMIZING CONDITIONER  
VOLUMIZING SPRAY



## MORPHOSIS RE-STRUCTURE EXPRESS FILLER

TREATMENT FOR TOTAL HAIR REGENERATION  
Gives damaged hair back its resistance, shine and manageability

RE-STRUCTURE REVITALISING SHAMPOO  
RE-STRUCTURE EXPRESS FILLER  
RE-STRUCTURE PRECIOUS FLUID



## MORPHOSIS RE-STRUCTURE EXPRESS BEAUTY

MAINTENANCE TREATMENT FOR SPLENDID HAIR AND HANDS, EVERY DAY  
Prolongs the benefits of professional reconstruction

RE-STRUCTURE SHAMPOO  
RE-STRUCTURE CONDITIONER  
RE-STRUCTURE LEAVE-IN  
COLLAGEN INTENSIVE HAND MASK  
COLLAGEN HAND CREAM



## MORPHOSIS RE-STRUCTURE PRO-FORCE

TREATMENT THAT PROTECTS HAIR DURING COLOURING AND DECOLOURING  
For stronger and more resistant hair

RE-STRUCTURE PRO-FORCE BONDER 101  
RE-STRUCTURE PRO-FORCE SEALER 102

HAIR

# FROM MEDITERRANEAN NATURE MAIN PRINCIPLES AND FRAGRANCES

For a total wellness sensation

## MAIN PRINCIPLES



### MORPHOSIS DENSIFYING

EXTRACT OF APPLE STEM CELLS  
Preserve the vitality of hair bulb and scalp cells promoting regeneration



### MORPHOSIS REINFORCING

EXTRACT OF VINE STEM CELLS  
Favour the longevity of scalp and follicle cells



### MORPHOSIS DESTRESS

EXTRACT OF ORGANIC CUCUMBER  
Eliminates scalp impurities leaving it fresh and hydrated



### MORPHOSIS BALANCE

EXTRACT OF ORGANIC LEMON  
Astringent and rebalancing for the hydro-lipid barrier

## FRAGRANCES

Grapefruit, citron, white peach  
Iris, rose, almond flower  
Amber, white musk, amber-coloured woods

Citrus fruits, aldehyde, marina  
Aromatic, green, pink  
Wood, amber, musk

Blackcurrant, bergamot, rose  
Iris, lily of the valley  
Vanilla, musk, sandalwood

Bergamot, lemon, menthol  
Tea leaves, basil  
Musk, cedar wood

## MAIN PRINCIPLES



### MORPHOSIS PURIFYING

EXTRACT OF ORANGE  
Astringent and antiseptic, helps fight the micro-organisms responsible for dandruff



### MORPHOSIS SCALP CONTROL

EXTRACT OF LEMON AND ORANGE  
Refreshing, prolongs the clean scalp sensation and controls the production of sebum



### MORPHOSIS REPAIR

SUNFLOWER SEED OIL  
Protective and shining, helps repair nerveless, damaged hair



### MORPHOSIS SUBLIMIS OIL

OIL OF ARGAN  
Hydrating and protective, prevents dehydration damage



### MORPHOSIS COLOR PROTECT

CORALLINA OFFICINALIS  
Favours cell oxygenation and protects colour shades against the fading action of light and heat



### MORPHOSIS VOLUMIZING

LINDEN EXTRACT  
Creates a flexible "film" that ties to the hair fibre and adds body and volume to hair

## FRAGRANCES

Eucalyptus, bergamot, basil  
Cyclamen, tea leaves, apple flowers  
Musk, cedar wood

Bergamot, basil, pink grapefruit  
Cyclamen, tea leaves  
Musk, cedar wood

Sorbet of bergamot, water bamboo, jasmine  
Heliotrope, violet petals, rice powder mix  
White musk, vanilla cream, cashmere wood

Mandarin, tangerine, bergamot, jasmine  
Iris, peach, heliotrope  
Vanilla, sandalwood, musk

Green leaves, orange, pear  
Lily of the valley, rose, patchouli  
Cedar wood, musk, vanilla

Bergamot, mandarin, blackcurrant, orange  
Peony, rose, freesia, jasmine  
Amber-coloured woods, heliotrope, patchouli, cedar wood

MORPHOSIS  
**DENSIFYING**

DENSIFYING ANTI-HAIR LOSS TREATMENT

Densifies and texturizes thin hair with a sensitive scalp. Especially suited for women





## SHAMPOO

Cleanses respecting the scalp's hydro-lipidic barrier, leaving hair soft and shiny. Especially indicated for women, effective help in anti-hair loss treatment. With **Extract of Apple Stem Cells** favours the longevity of scalp and follicle cells.

**With no SLES and sulphates, gluten, parabens and allergens.**

### TEXTURE

Limpid green fluid

### HOW TO USE

Spread over wet hair and scalp, massage carefully to favour skin microcirculation and then rinse.

250 – 1000 ml bottle

#### THE PERFECT SYNERGY

- Extracts of Olive Oil, softening and sebum-balancing
- Menthol, soothing and refreshing
- Conditioning agents for soft, easy-to-manage hair
- Vitamin B6, that prevents scalp problems
- Magnesium, in a biologically-available organic form, favours the absorption of minerals and vitamins
- Sun filter

## ACTIVATOR

Densifying activator serum for fragile hair. Especially indicated for women's hair, favours micro-circulation with a beneficial heating effect and stimulates natural regrowth of hair, reinforcing its structure. With **Extract of Apple Stem Cells**, protects the cells against oxidative stress and increases vitality with essential nutrients.

**With no parabens, gluten, perfume and allergens.**

### TEXTURE

Colourless limpid liquid

### HOW TO USE

Apply 3.5 ml (half a vial) of product to a dry or well towel-dried scalp at least 3 times a week (or every day, based on need). Massage carefully with circular movements until it is fully absorbed. Do not rinse.

12 x 7 ml vials

#### THE PERFECT SYNERGY

- Vitamin B6, works in synergy with zinc as an inhibitor of the 5-alpha-reductase
- Magnesium, in a biologically-available organic form, favours the absorption of minerals and vitamins
- Oil of Nigella, protective and hydrating on a sensitive, dry scalp
- Arginine, has a vasodilator effect on the scalp and repairs the hair shaft
- Vitamins H (biotin), E, provitamin B5 (panthenol), for cell wellness and functionality
- Betaine, an amino acid with strong hydrating power

MORPHOSIS  
**REINFORCING**

REINFORCING ANTI-HAIR LOSS TREATMENT

Revitalizes and gives body to thinning hair with an oily scalp. Especially suited for men





## SHAMPOO

Cleanses respecting the scalp's hydro-lipidic barrier and physiological pH, leaving hair with body and vitality. Especially indicated for treating men's hair, effective help in anti-hair loss treatment.

With **Extract of Vine Stem Cells**, favours the longevity of scalp and follicle cells.

**With no SLES and sulphates, gluten, parabens and allergens.**

### TEXTURE

Clear blue-purple fluid

### HOW TO USE

Spread over wet hair and scalp, massage carefully to favour skin microcirculation and then rinse.

250 – 1000 ml bottle

#### THE PERFECT SYNERGY

- Extracts of Olive Oil, softening and sebum-balancing
- Menthol, soothing and refreshing
- Conditioning agents for soft, manageable hair
- Arginine, with a vasodilator effect, favours the supply of oxygen and nutrients to the bulb
- Azelaic acid, powerful inhibitor of the 5-alpha-reductase, anti-microbial-anti-fungi powers
- Sun filter

## ACTIVATOR

Reinforcing activator serum for fragile hair. Especially indicated for treating men's hair. Favours microcirculation with a beneficial heating effect and stimulates the natural regrowth of hair, reinforcing its structure.

With **Extract of Vine Stem Cells**, protects the cells against oxidative stress and increases vitality with essential nutrients, thanks to the co-action of the hydrolysed extracts of Rocket and Walnut.

**With no parabens, gluten, perfume and allergens.**

### TEXTURE

Colorless limpid liquid

### HOW TO USE

Apply 3.5 ml (half a vial) of product to a dry or well towel-dried scalp at least 3 times a week (or every day, based on need). Massage carefully with circular movements until it is fully absorbed. Do not rinse.

12 x 7 ml vials

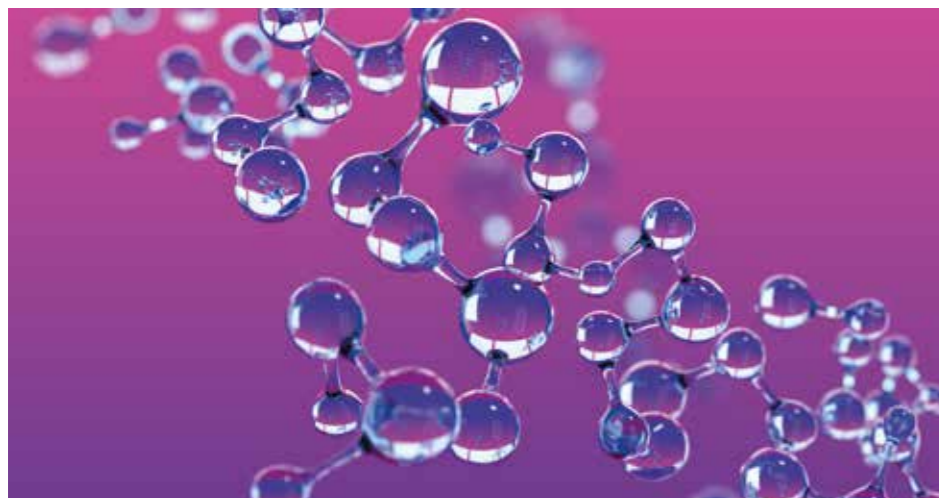
#### THE PERFECT SYNERGY

- Azelaic acid, powerful inhibitor of the 5-alpha-reductase, blocks the conversion of testosterone in DHT, with a positive action on hair. Blocks the production of sebum
- Zinc-PCA, is the biologically-available form of zinc indispensable for the growth of strong, healthy hair. Anti-microbial and odourless, hydrates the scalp in-depth normalizing conditions
- Vitamin H (biotin), associated with dermatitis and alopecia when missing
- Arginine, has a vasodilator effect on the scalp and repairs the hair shaft
- Vitamins E, B6, provitamin B5 (panthenol), for cell wellness and functionality
- Betaine, an amino acid with strong protective, hydrating power



# Tri-C-Peptides™

## THE EXCLUSIVE FRAMESI RESEARCH INNOVATION IN ANTI-HAIR LOSS



# BIO-TECHNOLOGY

The micro-encapsulated, biomimetic peptides are biotechnological active elements with a low molecular weight. The micro-encapsulation technology protects them and increases their biological-availability when applied, effectively transporting them into skin layers, down to the hair bulb, guaranteeing prolonged release over time. There are three peptides, for a full, synergic action on the hair bulb's entire life cycle.

### 1. COPPER TRIPEPTIDE - 1

Reinforces and stimulates the follicle, revitalizing and increasing its size reducing hair loss. It also stimulates the production of collagen, elastin and fibroblasts, for a healthy scalp, and has an anti-age, anti-inflammatory function.

### 2. OCTAPEPTIDE - 2

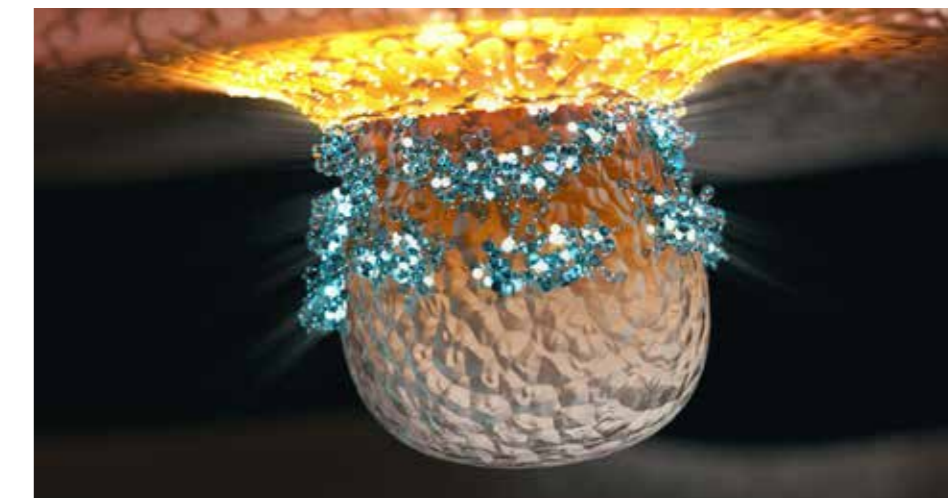
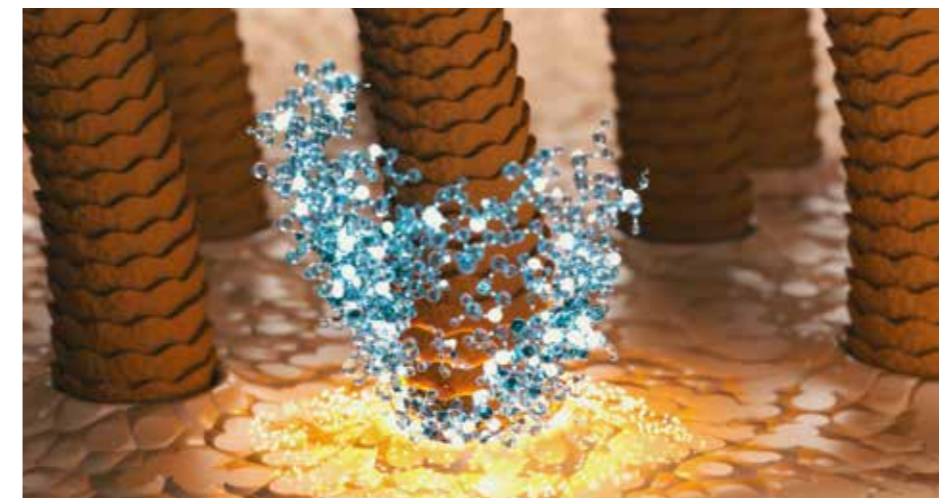
Accelerates hair growth, increases the cell proliferation of keratinocytes

and fibroblasts, increasing cell adhesion and the production of collagen and hyaluronic acid.

### 3. OLIGOPEPTIDE - 42

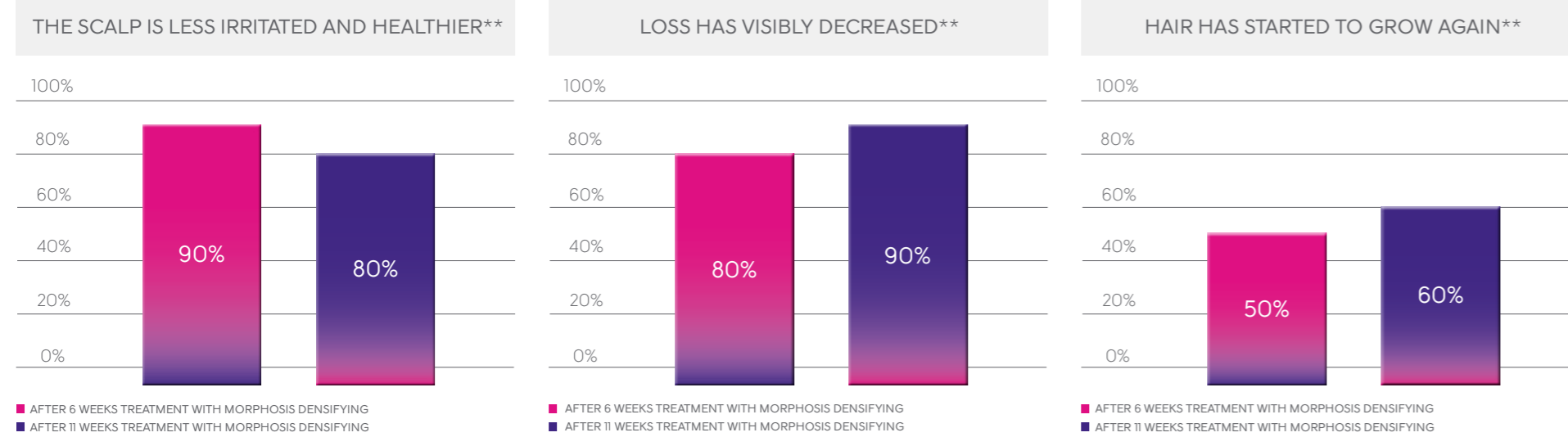
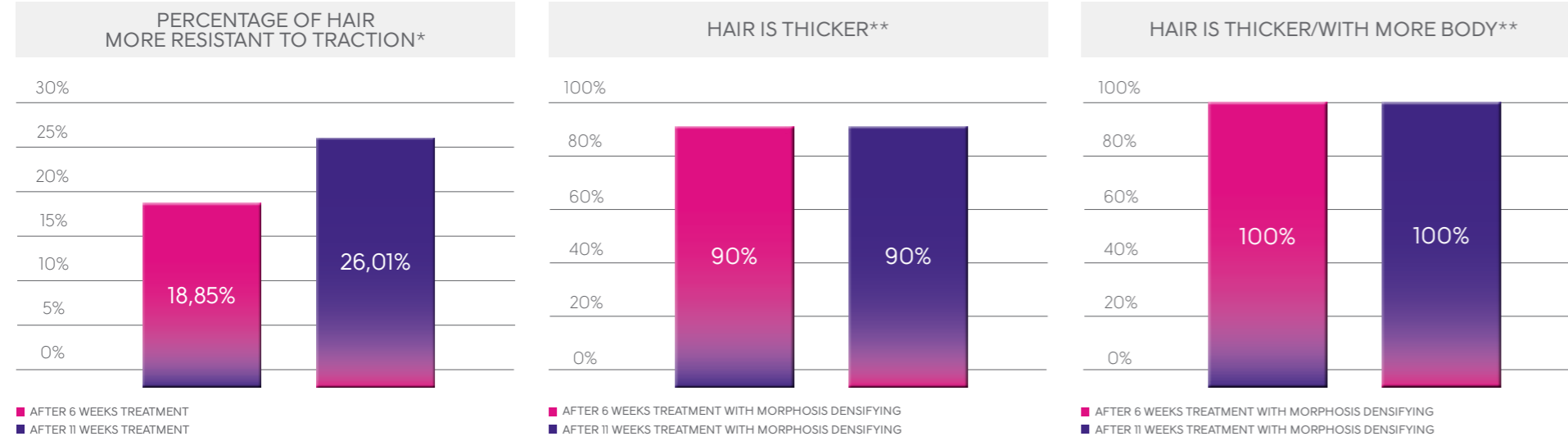
Accelerates hair growth, increases blood microcirculation, revitalizing follicles.

**VANILLYL BUTYL ETHER** is an anti-hair loss main principle providing a pleasant, prolonged sensation of heat to the skin. Stimulates blood microcirculation directly, inducing the release of neurotransmitters promoting vasodilation. This mechanism improves absorption of all the main principles, calms inflammation and favours synthesis of the hair's main growth factors in the follicle.



## THE SCIENTIFIC DENSIFYING TEST

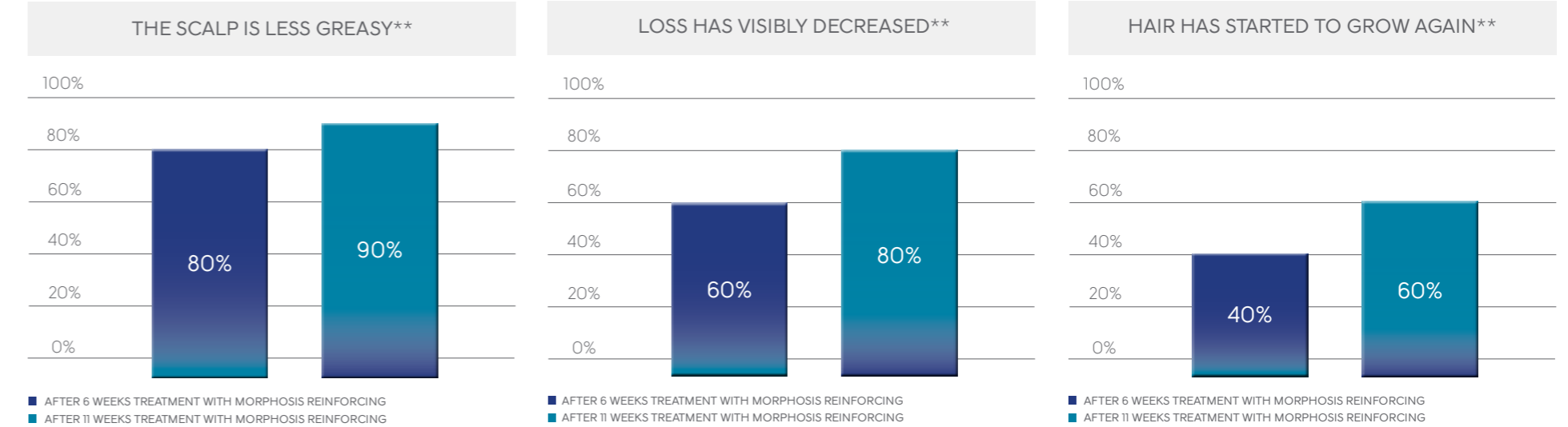
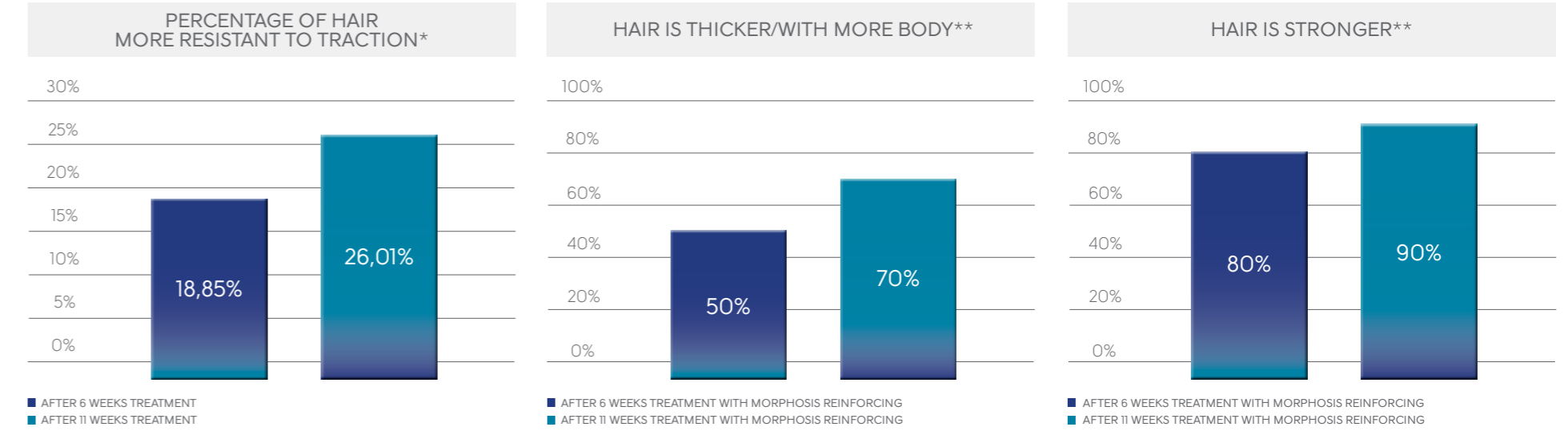
The effectiveness and self-assessment tests carried out by Eurofins of Roma, have detected top performance in the intensive MORPHOSIS DENSIFYING treatment.



\*Double blind clinical Study on 40 subjects  
\*\*Self-assessment test conducted on 10 women

## THE SCIENTIFIC REINFORCING TEST

The effectiveness and self-assessment tests carried out by Eurofins of Roma, have detected top performance in the intensive MORPHOSIS REINFORCING treatment.



\*Double blind clinical Study on 40 subjects  
\*\*Self-assessment test conducted on 10 men

MORPHOSIS  
**DESTRESS**

CALMING, REFRESHING TREATMENT

Gives sensitive scalp relief and wellness





## SHAMPOO

Soothing physiological pH shampoo. Specific for sensitive skin, cleanses delicately guaranteeing an effective freshening action. With **Extract of Organic Cucumber**, eliminates scalp impurities leaving it well hydrated.

**With no parabens, SLES and sulphates, gluten, allergens and colorants.**

### TEXTURE

Limpid white fluid

### HOW TO USE

Spread over scalp and on wet hair.  
Massage gently and rinse well.

250 – 1000 ml bottle

## SERUM

Concentrated sensitive scalp treatment, soothing and calming. With **Extract of Organic Cucumber**, ideal for relaxing the scalp. Stimulates cell regeneration and heals chapping.

**With no perfume, allergens, parabens, gluten and silicon.**

### TEXTURE

Limpid liquid

### HOW TO USE

Towel-dry hair and spread the product over scalp.  
Massage delicately. Do not rinse.

100 ml bottle

### THE PERFECT SYNERGY

- Extract of liquorice root that relieves irritated scalp discomfort
- Menthol, refreshing and soothing, for instant relief
- Vitamin E; protects and repairs the scalp and fights the free radicals
- Delicate surfactants, ideal for dry, sensitive skins
- Allantoin, favours scalp regeneration
- Betaine, to hydrate and regenerate cells
- Hyaluronic acid: hydrates the skin helping it recover tone and softness

MORPHOSIS  
**BALANCE**

REBALANCING TREATMENT

Normalizes and controls the production of sebum with oily scalp





## SHAMPOO

Specific cleanser for oily scalp through a delicate surfactant system. Restores the hydro-lipid barrier balance and soothes itching and redness. Physiological pH, ideal for all hair types leaving it soft, hydrated, manageable, light in weight and full of volume.

### TEXTURE

Limpid lemon-yellow fluid

### HOW TO USE

Pour the shampoo between your hands and spread it over a wet scalp. Massage with circular movements, pressing slightly with your fingertips to remove sebum deposits and dead cells. Rinse and repeat applying it to lengths. End with a careful rinse.

250 – 1000 ml bottle

### Balance Complex

**zinc-PCA** (inhibits the 5-alpha-reductase enzyme; maintains the ideal skin hydration level; performs a bacteriostatic action contrasting peeling, itching and bad smell)

+ **vitamin H** (regulates sebaceous gland secretion, fights peeling and hair loss)

+ **polyquaternium-22** (ties main principles to the scalp and makes hair soft and shiny)

### THE PERFECT SYNERGY

- Lemon extract, astringent and degreasing
- Menthol, refreshing and deodorizing

MORPHOSIS  
**PURIFYING**

PURIFYING ANTI-DANDRUFF TREATMENT

Controls and prevents skin peeling





## SHAMPOO

Specific treatment to eliminate and contrast the return of micro-organisms causing dandruff. With a delicate surfactant system, cleanses respecting the scalp's hydro-lipid film, soothes itchiness fast and makes any hair type soft, docile and well-conditioned.

### TEXTURE

Limpid orange fluid

### HOW TO USE

Pour the shampoo between your hands and spread it over a wet scalp. Massage with circular movements, pressing slightly with your fingertips to remove sebum deposits and dead cells. Rinse and repeat applying it to lengths. End with a careful rinse.

250 – 1000 ml bottle

### Purifying Complex

**piroctone olamine** (antiseptic that fights the micro-organisms responsible for dandruff)  
**+ acetyl salicylic acid** (purifying keratolytic agent that helps remove dandruff scales)  
**+ sugar ester of fatty acids** (hydrating, fights organisms causing dandruff, bad smell and scalp irritation)  
**+ beta-glucan** (healing, softening and soothing)  
**+ polyquaternium-11** (fixes main purifying principles to the scalp and keeps hair soft and manageable)

### THE PERFECT SYNERGY

- Orange extract, antiseptic, astringent
- Menthol, deodorizing and refreshing



MORPHOSIS  
**SCALP CONTROL**

IN-DEPTH, REFRESHING CLEANSING TREATMENT  
FOR THE SCALP

To exfoliate and revitalize the scalp. Prolongs that wellness feeling





## EXFOLIATE

With its delicate pure jojoba wax pearls, immersed in a soft emulsion, it eliminates sebum, dandruff deposits, dead cells and fixing products. Application stimulates surface blood circulation and gets the scalp ready to absorb the main principles of Morphosis treatments.

### TEXTURE

White cream with jojoba wax pearls

### HOW TO USE

Pour the cream in a bowl, mix and apply to the scalp with the brush. Massage delicately for at least 4 – 5 minutes running the jojoba pearls under your fingertips with a circular movement, without pressing too hard. Rinse and continue with the specific Morphosis treatment.

150 ml tube

## Scalp Refresh Complex

**zinc-PCA** (inhibits the 5-alpha-reductase enzyme, slows down the production of sebum and bacterial proliferation)  
**+ vitamin H** (regulates sebaceous gland secretion, fights peeling and hair loss)  
**sugar ester of fatty acids** (protects scalp and hair and maintains the right hydro-lipidic level)  
**+ polyquaternium-11** (ties main principles to the scalp and makes hair soft and shiny)

## REFRESH SPRAY

No rinse formula to refresh the scalp and lengthen salon treatment effectiveness. With anti-dandruff and sebum-regulatory principles, keeps the scalp hydrated and deodorized, for a lasting clean feeling. **With no parabens, silicon and gluten.**

### TEXTURE

Limpid amber-coloured liquid

### HOW TO USE

After towel-drying hair, spray on scalp by zones and massage delicately. Do not rinse.

100 ml bottle

### THE PERFECT SYNERGY

- Extract of lemon, orange and pomegranate, refreshing and softening
- Shea butter, softening for scalp and hair
- Menthol, refreshing and deodorizing
- Betaine TMG, hydrating and nourishing

MORPHOSIS  
**REPAIR**

REPAIRING, SHINING TREATMENT

Hydrates and repairs damaged, nerveless hair





## SHAMPOO

Washes hair and scalp gently getting them ready for nourishing, repairing treatments. **Sunflower Seed Oil** present in the formula disentangles and leaves hair soft, shiny, with body.

### TEXTURE

Pearly white fluid

### HOW TO USE

Pour the shampoo in your hands and apply from roots to ends massaging for a few minutes to favour penetration of the main principles. Rinse with warm water and repeat.

250 – 1000 ml bottle

## CONDITIONER

For fine and normal hair; the right consistency for frequent use; does not weigh hair down and makes the damaged shaft silky and manageable. Perfect conditioning and protection after decolouring, straightening and permanent waving. With hydrating, protective **Sunflower Seed Oil**.

### TEXTURE

Soft white cream

### HOW TO USE

Towel-dry hair and apply the conditioner massaging delicately along lengths. Leave on for at least 5 minutes and then rinse carefully.

250 tube – 1000 ml bottle

### REPAIR – TYPE OF HAIR

- Damaged hair
- Nerveless hair
- Dry hair

## RICH TREATMENT

Mask for thick, badly exploited hair. Nourishes deep down, thanks to hair cortex reconstituting ingredients such as **Sunflower Seed Oil**, NP ceramides, almond proteins and hyaluronic acid which protects the cuticle.

### TEXTURE

Shiny soft white cream

### HOW TO USE

Towel-dry hair and apply to lengths and ends massaging delicately. Leave on for at least 5 minutes. Rinse well and dry.

200 ml pot

## VELVET

Disciplining, fill-up effect fluid: fills up hair pores making hair uniform, shiny, with body. Eliminates the frizz effect and facilitates styling. Based on **Sunflower Seed Oil**.

### TEXTURE

White cream fluid

### HOW TO USE

Towel-dry hair and apply to lengths and ends. Do not rinse and proceed to dry.

100 ml bottle

## SERUM

Intensive, illuminating treatment for very dry, dull, weak, nerveless hair. To be used before Repair Conditioner, Repair Rich Treatment or Repair Velvet, it nourishes and repairs hair from inside thanks to its high penetration capacity. Enriched with **Sunflower Seed Oil** that protects and hydrates.

### TEXTURE

Self-heating limpid serum

### HOW TO USE

Cold use: for fast, instant treatment. Towel-dry hair and spread the serum massaging. Leave the emulsion obtained on for 5 minutes and rinse well. Apply Conditioner, Rich Treatment or Velvet based on need.

Hot use: for an in-depth treatment. Towel-dry hair and massage the serum on all lengths. Dry delicately with hair dryer and brush up to 80%. Pass the iron over hair lock by lock until hair is almost completely dry. Rinse well and apply Conditioner, Rich Treatment or Velvet based on need.

6 x 15 ml vials

### THE PERFECT SYNERGY

- NP ceramides, to compact hair cortex
- Almond protein, repairing
- Hyaluronic acid, hydrating and able to give the hair fibre back its flexibility
- Panthenol, softening, shining action
- Quaternium-22, latest generation polymer that fixes in points where hair is the most damaged. Coats the hair fibre with a thermal-protective effect

MORPHOSIS  
**SUBLÌMIS OIL**

NOURISHING, DISCIPLINING TREATMENT

Illuminates and makes hair silky with an anti-frizz effect





## SHAMPOO

With 5.5 pH and delicate surfactants, it cleanses the scalp gently for hydration and softness. Its creamy, enveloping foam is rich in the marvellous properties of **Oil of Argan**.  
**With no SLES and sulphates, gluten and parabens.**

### TEXTURE

Limpid golden-yellow fluid

### HOW TO USE

Massage the shampoo from roots to ends, working more on any dry areas. Leave on for a few minutes to allow the main principles to penetrate the shaft, and then rinse well with warm water. Repeat if needed.

250 – 1000 ml bottle

## CONDITIONER

Studied for normal, fine hair; provides hydration, silkiness, softness and manageability. Its light texture penetrates the hair fibre adding all the benefits of **Oil of Argan**, without weighing lengths down.  
**With no parabens and gluten.**

### TEXTURE

White fluid cream

### HOW TO USE

Towel-dry hair and apply the conditioner massaging delicately along lengths. Leave on for at least 5 minutes and then rinse carefully.

250 tube – 1000 ml bottle

### SUBLIMIS OIL – TYPE OF HAIR

- For all hair types: from normal to especially dry
- Dehydrated hair

## DEEP TREATMENT

A formula based on **Oil of Argan** for thick or particularly dry hair. Nourishes and reinforces, softens and illuminates. Its consistency sends main principles deep down making the reconditioning action even more effective.

**With no parabens and gluten.**

### TEXTURE

Soft white cream

### HOW TO USE

Towel-dry hair and apply the mask massaging delicately along lengths. Leave on for 5-15 minutes, based on need, and then rinse well

200 ml pot

## PURE OIL

Protective, regenerating treatment; its rich formula combines the incomparable virtues of **Oil of Argan** with a vitamin, conditioner and protective filter mix. Responds to the various needs of the different hair types: it hydrates dry hair, revitalizes treated hair, and has an anti-age action on mature hair.

**With no parabens, preservatives and gluten.**

### TEXTURE

Limpid amber-coloured liquid

### HOW TO USE

Apply before and/or after drying to shine hair, hydrate it and control static electricity.

125 ml bottle

## SHINE LIGHT OIL

An oil to shine hair and enhance colour gloss. Its ultra-light texture makes it especially suited for fine hair; it becomes docile with a new light without being weighed down. Adds a shine to all hair types. Based on **Oil of Argan**.

**With no parabens, preservatives and gluten.**

### TEXTURE

Limpid amber-coloured liquid

### HOW TO USE

Apply before drying to shine fine hair and give it body. Spray on dry hair for a perfumed, shining finish.

125 ml bottle

## ALL DAY MOISTURE EMULSION

Hydrating emulsion spray for hair, effective instantly. Regenerates hair fibre making hair softer, silky and easy to manage, without weighing it down. Eliminates the frizz effect. With Oil of Baobab and **Oil of Argan**.

**With no parabens and gluten.**

### TEXTURE

White fluid emulsion

### HOW TO USE

Spray uniformly over towel-dried hair. Spread on lengths and ends using a comb. Do not rinse.

150 ml bottle

#### THE PERFECT SYNERGY

- Extracts of certified organic fruit that nourish the shaft in depth
- Certified organic Baobab oil, with specific shining, hydrating and nourishing qualities
- Vitamin E, anti-oxidizer of proven effects
- Betaine, hydrating and revitalizing
- Panthenol, hydrating, softening provitamin



MORPHOSIS  
**COLOR PROTECT**

COLOR PROTECTION TREATMENT

Prevents fading and dehydration for longer-lasting colour





## SHAMPOO

Cleanses delicately and is ideal for frequent use between one colouring service and the next. Thanks to the **Corallina Officinalis** seaweed, it helps prevent cosmetic colouring from fading and makes hair more brilliant.

**With no SLES and sulphates, gluten.**

### TEXTURE

Soft pink fluid

### HOW TO USE

Pour the shampoo in your hands and apply from roots to ends massaging for a few minutes to favour penetration of the main principles. Rinse with warm water and repeat.

250 – 1000 ml bottle

## CONDITIONER

For fine and normal hair, making it shiny, silky and soft, protecting colour and preventing fading thanks to its formula with **Corallina Officinalis**. Protects hair against hairdryer heat and straightening iron stress.

**Gluten-free.**

### TEXTURE

White cream fluid

### HOW TO USE

Towel-dry hair and spread uniformly over the entire length. Massage gently and leave on for 5 minutes. Rinse thoroughly with warm water.

250 tube – 1000 ml bottle

### COLOR PROTECT - TYPE OF HAIR

- Coloured hair
- Hair with highlights
- Lightened hair



## INTENSIVE TREATMENT

For thick or particularly dry hair; nourishes and hydrates deep down making hair really soft. Its formula, enriched with **Corallina Officinalis** and Shea butter, protects hair from environmental factors, helps colour last longer keeping intensity and shine unaltered. **Gluten-free.**

### TEXTURE

Rich pink cream

### HOW TO USE

Towel-dry hair and apply on lengths and ends massaging delicately. Leave on for 5 minutes then rinse well and dry.

200 ml pot

## BI-PHASE

Bi-phase spray ideal for making colour last longer. Its silk-effect increases light refraction, valorising the intensity of cosmetic colour. Makes hair soft and hydrated without weighing it down. It performs an anti-frizz action; makes it easier to comb and protects against hairdryer and iron heat thanks to its formula with the seaweed **Corallina Officinalis**. **With no parabens and gluten.**

### TEXTURE

Bi-phase liquid: limpid pink and white

### HOW TO USE

Shake well before use. Spray on wet hair from roots to ends before styling.

150 ml bottle

### EFFICACY APPRAISAL ON MORPHOSIS COLOR PROTECT



COLOR JUST APPLIED



AFTER 4 WEEKS TREATMENT WITH MORPHOSIS COLOR PROTECT



AFTER 4 WEEKS TREATMENT WITH COMPETITORS' COLOR PROTECTION LINES

Appraisal according to blind testing standards

### THE PERFECT SYNERGY

- Vitamin E, anti-ageing, anti-free radicals
- Inulin, with hydrating power
- Quaternium-22, heat protection
- Shea Butter, softening and disentangling

MORPHOSIS  
**VOLUMIZING**

VOLUMIZING, ENERGIZING TREATMENT

Gives fine hair more body and makes it easier to manage





## SHAMPOO

Thanks to its **Linden Extract** and almond protein, shampooing becomes a hydrating, nourishing, restructuring, and volumizing action. The antistatic effect is very important too as it eliminates that troublesome phenomenon typical of fine, dry hair.  
**No SLES and sulphates, gluten and parabens.**

### TEXTURE

Transparent, colourless fluid

### HOW TO USE

Pour the shampoo between your hands and spread it over scalp and hair massaging carefully.  
Rinse well with warm water and repeat the application.

250 – 1000 ml bottle

## CONDITIONER

Light treatment, in gel form, with no oils that could weigh hair down. Innovative in texture and ingredients, its substantivating action increases hair shaft body and consistency, making it easier to comb and style. The **Linden Extract** and almond protein, line specialities, penetrate the hair with their nourishing, hydrating main principles.  
**No parabens and gluten.**

### TEXTURE

Semi-transparent, colourless gel

### HOW TO USE

Apply after shampoo to towel-dried hair. Spread on lengths and ends and massage gently. Leave on for 2 - 3 minutes and then rinse carefully.

250 tube – 1000 ml bottle

### VOLUMIZING - TYPE OF HAIR

- Fine hair
- Hair with no volume



## SPRAY

To volumize and shape fine hair; a product to give it body and structure without weighing it down. Formula substances make it easy to work the hair thanks to natural, lasting support. The end effect after drying is that of a full head of hair with shiny colour. **No parabens and gluten.**

### TEXTURE

Colourless limpid liquid

### HOW TO USE

Spray uniformly on wet hair and dry without rinsing.

100 ml bottle

#### THE PERFECT SYNERGY

- Almond proteins that nourish and repair hair fibre
- Cationic and silicon polymer, helps protect hair and cosmetic colour
- Polyquaternium 11, helps fix main principles to the shaft and maintain hair with body and easy to comb
- Betaine, amino acid that nourishes and hydrates scalp and hair
- Modified starch, disentangles, hydrates and nourishes the hair without weighing it down
- Panthenol, hydrating and strengthening the shaft
- Anti-UV sun filter
- Fixative resins, coat and support the hair naturally
- Natural cationic fixative polymers, for shine and volume, fight the anti-frizz effect and electrostatic charges, to protect against humidity and the heat from hairdryer and straightening iron

MORPHOSIS  
**RE-STRUCTURE**  
EXPRESS FILLER

TREATMENT FOR TOTAL HAIR REGENERATION

Gives damaged hair back its resistance, shine and manageability





## PHASE 1 REVITALISING SHAMPOO

Purifying, with surfactants of plant origin and acid pH. Cleanses in depth leaving the hair soft, hydrated and ready to receive regenerating main principles. With precious elements to nourish the scalp and bulb too.

**With no SLES and sulphates, gluten and parabens.**

### TEXTURE

Limpid amber fluid

### HOW TO USE

Pour 10 - 15 ml of shampoo in your hands and apply from roots to ends massaging for a few minutes to favour penetration. Rinse with warm water and repeat.

Towel dry and then use MORPHOSIS RE-STRUCTURE EXPRESS FILLER.

1000 ml bottle

## PHASE 2 EXPRESS FILLER

Restructuring gel to fill out and repair hair fibre in depth. Re-thickens and re-compacts shaft surface transforming texture instantly.

**With no parabens.**

### TEXTURE

Fluid gel

### HOW TO USE

Divide hair into large locks and apply 15 – 20 ml of product using the brush provided. Comb carefully to spread it uniformly and favour main principle absorption. Leave on for 15 – 20 minutes under a source of heat.

Rinse well, towel dry hair and then use MORPHOSIS RE-STRUCTURE PRECIOUS FLUID.

1000 ml bottle



## PHASE 3 PRECIOUS FLUID

Intensive disciplining treatment. Restores hair fibre's natural beauty and elasticity. Thanks to last generation components, smooths and re-compacts the cuticles to trap the main principles for longer-lasting benefits. Extraordinary shine and softness for hair.  
**With no parabens and gluten.**

### TEXTURE

White cream fluid

### HOW TO USE

Spread 15 – 20 ml of product on hair and massage carefully. Leave on for at least 5 minutes.  
Rinse well and style.

1000 ml bottle

### TREATMENT FREQUENCY

#### BADLY DAMAGED HAIR

first 2 sessions within 15 days of each other, then 1 session a month

#### DAMAGED HAIR

1 session a month

#### THE PERFECT SYNERGY

- Marine collagen – the protein of tonicity . Fills the most damaged parts helping hair recover elasticity
- Hyaluronic acid – the hydrating main principle. Its molecules incorporate water and act as a cementing substance, helping hair recover hydration
- Pearl extract – the protein of shine. Rich in 16 amino acids, micro-nutrients and polysaccharides, repairs hair from inside making it compact and shiny
- Silicon – the re-birth element. Reintegrates the minerals and gives hair back its shine while speeding up the keratinization process and the synthesis of collagen and elastin.
- Vitamin E – the anti-oxidiser par excellence. Protects against agents causing free radicals to form and maintains hair vitality.

# MORPHOSIS RE-STRUCTURE EXPRESS BEAUTY

MAINTENANCE TREATMENT  
FOR SPLENDID HAIR AND HANDS, EVERY DAY

Prolongs the benefits of professional reconstruction



## SHAMPOO

Ideal for all hair types, thanks to its innovative, marine collagen formula it performs an effective revitalising action, extending the beneficial effects of the salon's EXPRESS FILLER treatment. Specifically studied to be used at home, cleanses deep down leaving hair extremely shiny and hydrated.

**With no parabens, SLES and sulphates.**

### TEXTURE

Limpid amber fluid

### HOW TO USE

Spread on wet scalp and hair, massage gently. Rinse carefully and then use MORPHOSIS RE-STRUCTURE CONDITIONER or MORPHOSIS RE-STRUCTURE LEAVE-IN.

250 ml bottle

## CONDITIONER

Revitalises all hair types in depth. Thanks to the power of its main principles it restores natural shaft beauty making hair shiny and easy-to-comb.

**With no parabens and gluten.**

### TEXTURE

White cream fluid

### HOW TO USE

Apply after MORPHOSIS RE-STRUCTURE SHAMPOO to towel-dried hair. Spread on lengths and ends and massage gently. Leave on for a few minutes and rinse well.

250 ml tube

## LEAVE-IN

Conditioning, regenerating spray emulsion. Effective instantly, nourishes hair in depth, making it soft, shiny and disciplined. Particularly suited for thick hair.

**With no parabens and gluten.**

## TEXTURE

White fluid emulsion

## HOW TO USE

Spray uniformly on towel-dried hair after MORPHOSIS RE-STRUCTURE SHAMPOO or spread on hands and then on hair using a comb. Do not rinse and style as desired.

150 ml bottle

## COLLAGEN INTENSIVE HAND MASK

The regenerating power of the Express Filler treatment for hand beauty too.

Intensive, regenerating mask for hands. Rich in precious main principles, including Shea butter, marine collagen and hyaluronic acid, renews skin making hands look visibly healthier and velvety.

**With no parabens, silicon, mineral oils and gluten.**

## HOW TO USE

Apply 10 g of product to clean, dry hands. Spread the product with a light massage or brush, from the backs to fingertips. Wear the gloves supplied and leave on for 10/15 minutes. Remove the gloves, dry excess product with a tissue or dry towel without rinsing.

250 ml tube

## COLLAGEN HAND CREAM

For perfectly cared hands every day. It is a soft, velvety cream, rich in Shea butter, marine collagen and hyaluronic acid. Used regularly it helps keep the skin healthy and elastic.

**With no parabens, silicon, mineral oils and gluten.**

## HOW TO USE

Apply in the morning, at night and each time hands seem dry and stressed. Massage until completely absorbed.

75 ml tube

# MORPHOSIS RE-STRUCTURE PRO-FORCE

TREATMENT THAT PROTECTS HAIR  
DURING COLOURING AND DECOLOURING

For stronger and more resistant hair



## PRO-FORCE BONDER

Additive to be mixed directly with decolouring and colouring products. Protects and reinforces the hair fibre reducing the hair breakage risk to a minimum. Gives colour more intensity and brilliance. Use of Morphosis Re-Structure PRO-FORCE BONDER does not change the normal application time for technical services.  
**With no parabens, gluten and perfume.**

### TEXTURE

White cream fluid

500 ml bottle

### HOW TO USE

#### STEP 1

Add 8 g\* (4 presses) of Morphosis Re-Structure PRO-FORCE BONDER 101 for each 30 g of decolourant or 4 g\* (2 presses) of Morphosis Re-Structure PRO-FORCE BONDER 101 for each colour tube

#### STEP 2

Apply the mixture as usual and, after normal processing time, rinse carefully.

#### STEP 3

Do not apply any shampoo and, after towel-drying hair, distribute 10-20 g\* (between 5 and 10 presses) of Morphosis Re-Structure PRO-FORCE SEALER 102 to lengths and comb carefully.

#### STEP 4

Leave on for 5 minutes and then rinse carefully.

#### STEP 5

Continue with Framesi Shampoo and Conditioner, based on hair characteristics.

\*each press of the bottle's pump provides you with 2 g of product

## PRO-FORCE SEALER

Intensive treatment that seals the hair structure, restoring hydration and links in the fibre making hair shiny and visibly healthy.  
**With no parabens and gluten.**

### TEXTURE

White cream fluid

1000 ml bottle

### PRO-FORCE – TYPE OF HAIR

- Damaged, exploited hair
- Sensitised hair
- Dry, nerveless hair
- Decoloured and coloured hair
- Hair with highlights

### THE PERFECT SYNERGY

- Softening, protective polymer for hydration and resistance to oxidation
- Marine collagen for tone and elasticity
- Hyaluronic acid to hydrate the fibre
- Pearly extract for brilliance and restructuring
- Silicon to reintegrate minerals and accelerate the synthesis of collagen and elastin
- Antioxidant vitamin E
- Panthenol to protect and reinforce the shaft
- Long-lasting filming to compact cuticles and prolong result duration



[www.framesi.it](http://www.framesi.it)

